

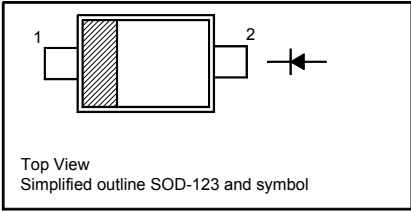
BAT42W, BAT43W-CH

Surface Mount Schottky Barrier Diode

Features

- AEC-Q101 Qualified
- Low forward voltage drop
- Fast switching
- Halogen and Antimony Free(HAF),
RoHS compliant

PIN	DESCRIPTION
1	Cathode
2	Anode



Absolute Maximum Ratings ($T_a = 25^{\circ}\text{C}$ unless otherwise specified)

Parameter	Symbol	Value	Unit
Repetitive Peak Reverse Voltage	V_{RRM}	30	V
Reverse Voltage	V_R	30	V
Average Forward Rectified Current	$I_{F(AV)}$	200	mA
Repetitive Peak Forward Current at $t < 1$ s	I_{FRM}	500	mA
Non-Repetitive Peak Forward Surge Current at $t < 10$ ms	I_{FSM}	2	A
Power Dissipation	P_{tot}	200	mW
Operating Junction and Storage Temperature Range	T_J, T_{Stg}	- 55 to + 125	$^{\circ}\text{C}$

Thermal Characteristics

Parameter	Symbol	Value	Unit
Typical Thermal Resistance from Junction to Ambient ¹⁾	$R_{\theta JA}$	500	$^{\circ}\text{C/W}$

¹⁾ Device mounted on FR-4 substrate PC board, 2oz copper, with minimum recommended pad layout.

BAT42W, BAT43W-CH

Characteristics at T_a = 25°C

Parameter	Symbol	Min.	Max.	Unit
Reverse Breakdown Voltage at I _R = 100 µA	V _{(BR)R}	30	-	V
Reverse Current at V _R = 25 V	I _R	-	500	nA
Forward Voltage at I _F = 200 mA	V _F	-	1	V
at I _F = 10 mA		-	0.4	V
at I _F = 50 mA		-	0.65	V
at I _F = 2 mA		0.26	0.33	V
at I _F = 15 mA		-	0.45	V
Total Capacitance at V _R = 1 V, f = 1 MHz	C _T	-	10	pF
Reverse Recovery Time at I _F = I _R = 10 mA, I _{rr} = 0.1 X I _R , R _L = 100 Ω	t _{rr}	-	5	ns

Electrical Characteristics Curves

Fig 1. Reverse Characteristics Curve

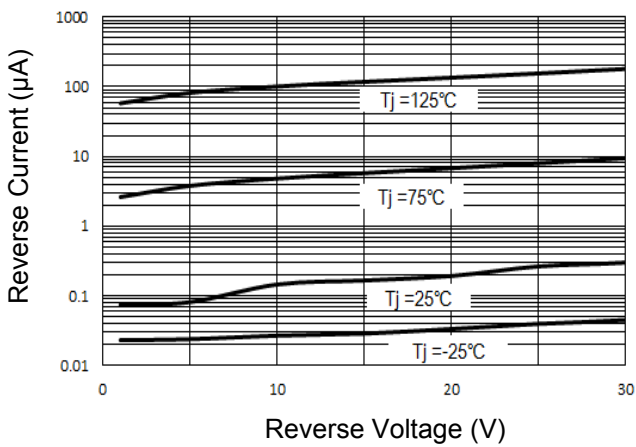


Fig 2. Forward Characteristics Curve

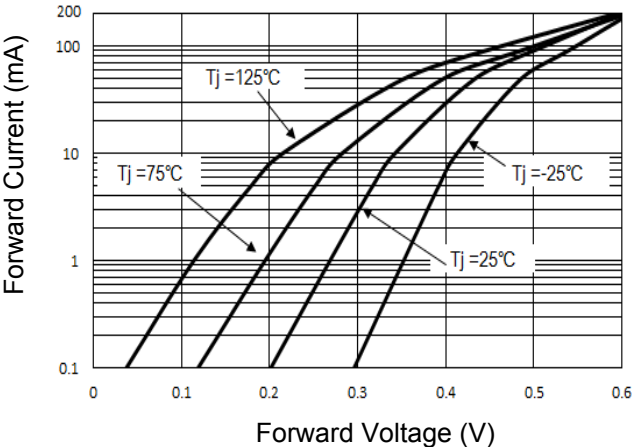


Fig 3. Junction Capacitance

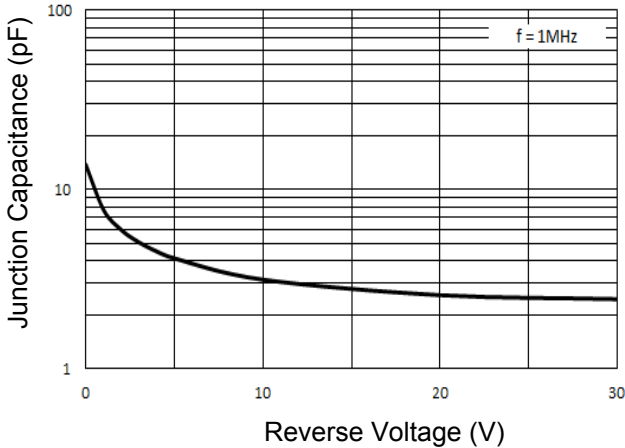
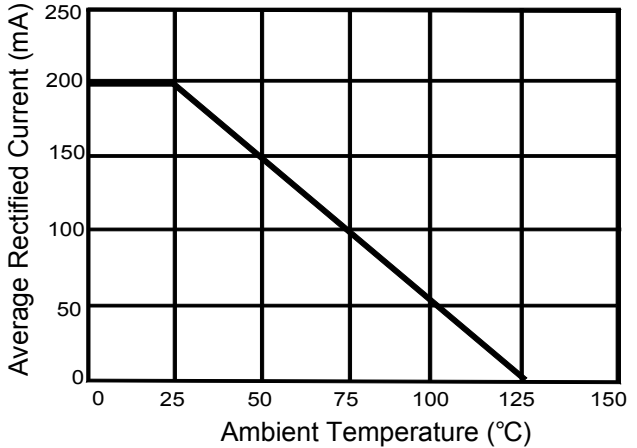


Fig 4. Average Rectified Current Derating Curve

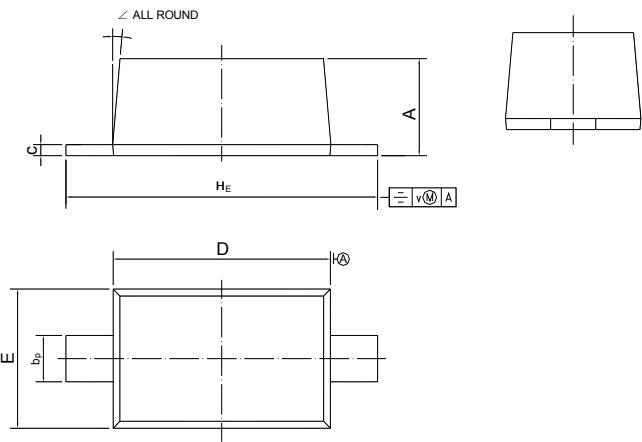


BAT42W, BAT43W-CH

PACKAGE OUTLINE

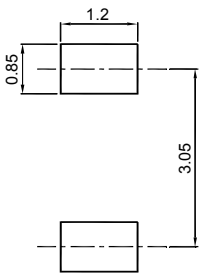
Plastic surface mounted package; 2 leads

SOD-123



UNIT	A	b _p	c	D	E	H _E	v	∠
mm	1.15 1.05	0.6 0.5	0.135 0.100	2.7 2.6	1.65 1.55	3.85 3.55	0.2	5°

Recommended Soldering Footprint



Packing information

Package	Tape Width (mm)	Pitch		Reel Size		Per Reel Packing Quantity
		mm	(inch)	mm	(inch)	
SOD-123	8	4 ± 0.1	0.157 ± 0.004	178	7	3,000

Marking information

" ** " = Part No.

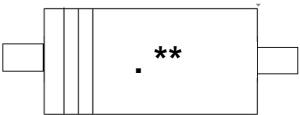
BAT42W : PX

BAT43W : PY

" III " = Cathode line

" • " = HAF (Halogen and Antimony Free)

Font type: Arial



Disclaimer: Our company reserve the right to make modifications, enhancements, improvements, corrections or other changes to improve product design, functions and reliability, anytime without notice. Semtech Electronics Limited makes no warranties, representations or warranties regarding the suitability of its products for any particular purpose, and does not accept any liability arising from the application or use of any product or circuit such as: Apply to medical, military, aircraft, space or life support equipment and expressly waive any and all liability, including but not limited to special, consequential or collateral damage.