

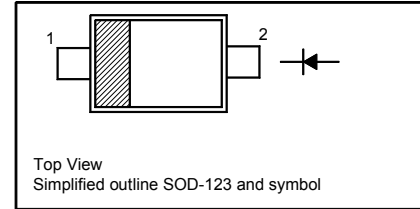
MBR0540-CH

Surface Mount Schottky Barrier Diode

Features

- AEC-Q101 Qualified
- Low forward voltage
- High conductance
- Halogen and Antimony Free(HAF),
RoHS compliant

PIN	DESCRIPTION
1	Cathode
2	Anode



Absolute Maximum Ratings ($T_a = 25^{\circ}\text{C}$ unless otherwise specified)

Parameter	Symbol	Value	Unit
Peak Repetitive Reverse Voltage	V_{RRM}	40	V
Reverse Voltage	V_R	40	V
Average Rectified Forward Current	$I_{F(AV)}$	500	mA
Peak Forward Surge Current 8.3 ms Single Half Sine-Wave Superimposed on Rated Load (JEDEC Method)	I_{FSM}	5.5	A
Operating Junction Temperature Range	T_j	- 65 to + 150	$^{\circ}\text{C}$
Storage Temperature Range	T_{stg}	- 65 to + 150	$^{\circ}\text{C}$

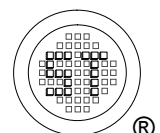
Thermal Characteristics

Parameter	Symbol	Value	Unit
Typical Thermal Resistance Junction to Ambient ¹⁾	$R_{\theta JA}$	206	$^{\circ}\text{C/W}$
Typical Thermal Resistance Junction to Lead	$R_{\theta JL}$	118	$^{\circ}\text{C/W}$

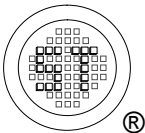
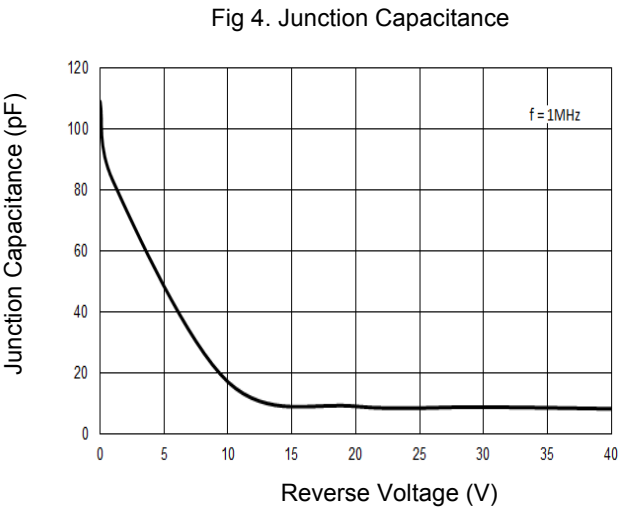
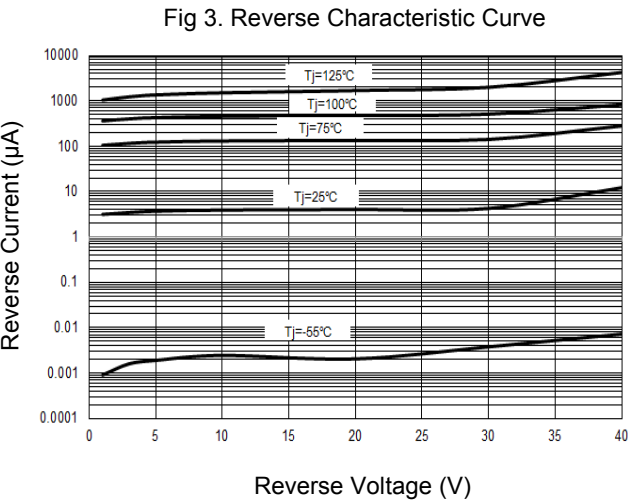
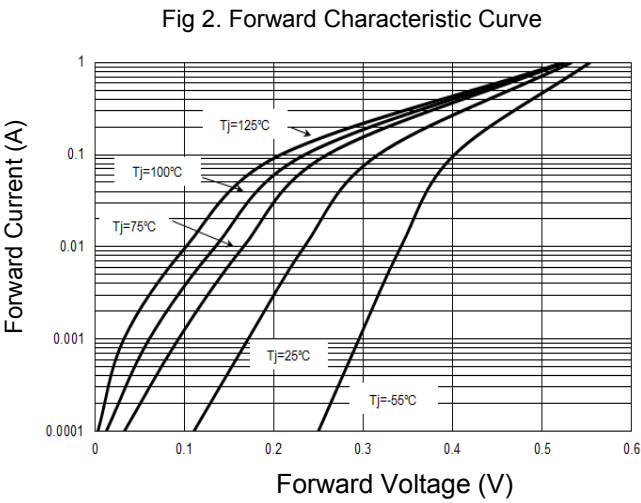
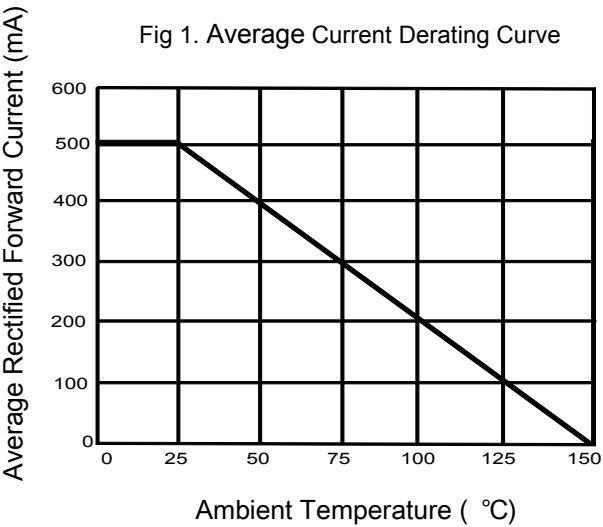
¹⁾ Device mounted on FR-4 substrate PC board, 2oz copper, with minimum recommended pad layout.

Characteristics at $T_a = 25^{\circ}\text{C}$

Parameter	Symbol	Min.	Max.	Unit
Reverse Breakdown Voltage at $I_R = 100 \mu\text{A}$	$V_{(BR)R}$	40	-	V
Forward Voltage at $I_F = 0.5 \text{ A}$ at $I_F = 1 \text{ A}$ at $I_F = 0.5 \text{ A}, T_j = 100^{\circ}\text{C}$ at $I_F = 1 \text{ A}, T_j = 100^{\circ}\text{C}$	V_F	- - - -	0.51 0.62 0.46 0.61	V
Reverse Current at $V_R = 20 \text{ V}$ at $V_R = 40 \text{ V}$ at $V_R = 20 \text{ V}, T_j = 100^{\circ}\text{C}$ at $V_R = 40 \text{ V}, T_j = 100^{\circ}\text{C}$	I_R	- - - -	10 20 5 13	μA μA mA mA



Electrical Characteristic Curves

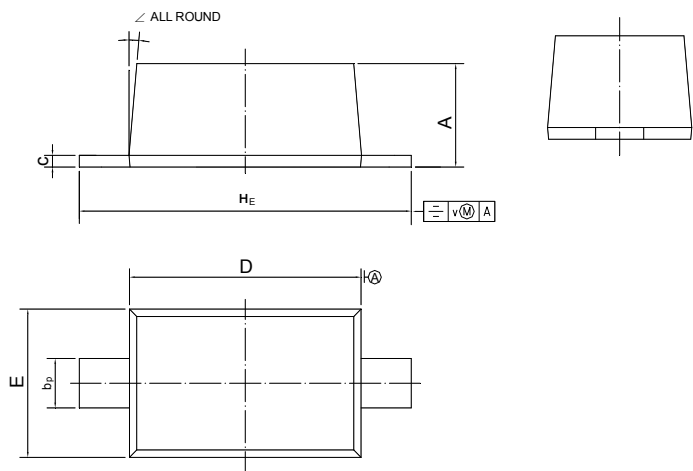


MBR0540-CH

PACKAGE OUTLINE

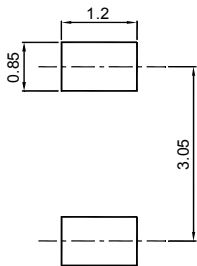
Plastic surface mounted package; 2 leads

SOD-123



UNIT	A	b _p	c	D	E	H _E	v	∠
mm	1.15 1.05	0.6 0.5	0.135 0.100	2.7 2.6	1.65 1.55	3.85 3.55	0.2	5°

Recommended Soldering Footprint

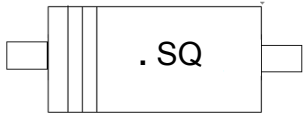


Packing information

Package	Tape Width (mm)	Pitch		Reel Size		Per Reel Packing Quantity
		mm	(inch)	mm	(inch)	
SOD-123	8	4 ± 0.1	0.157 ± 0.004	178	7	3,000

Marking information

" SQ " = Part No.
" III " = Cathode line
" • " = HAF (Halogen and Antimony Free)
Font type: Arial



Disclaimer: Our company reserve the right to make modifications, enhancements, improvements, corrections or other changes to improve product design, functions and reliability, anytime without notice. Semtech Electronics Limited makes no warranties, representations or warranties regarding the suitability of its products for any particular purpose, and does not accept any liability arising from the application or use of any product or circuit such as: Apply to medical, military, aircraft, space or life support equipment and expressly waive any and all liability, including but not limited to special, consequential or collateral damage.

